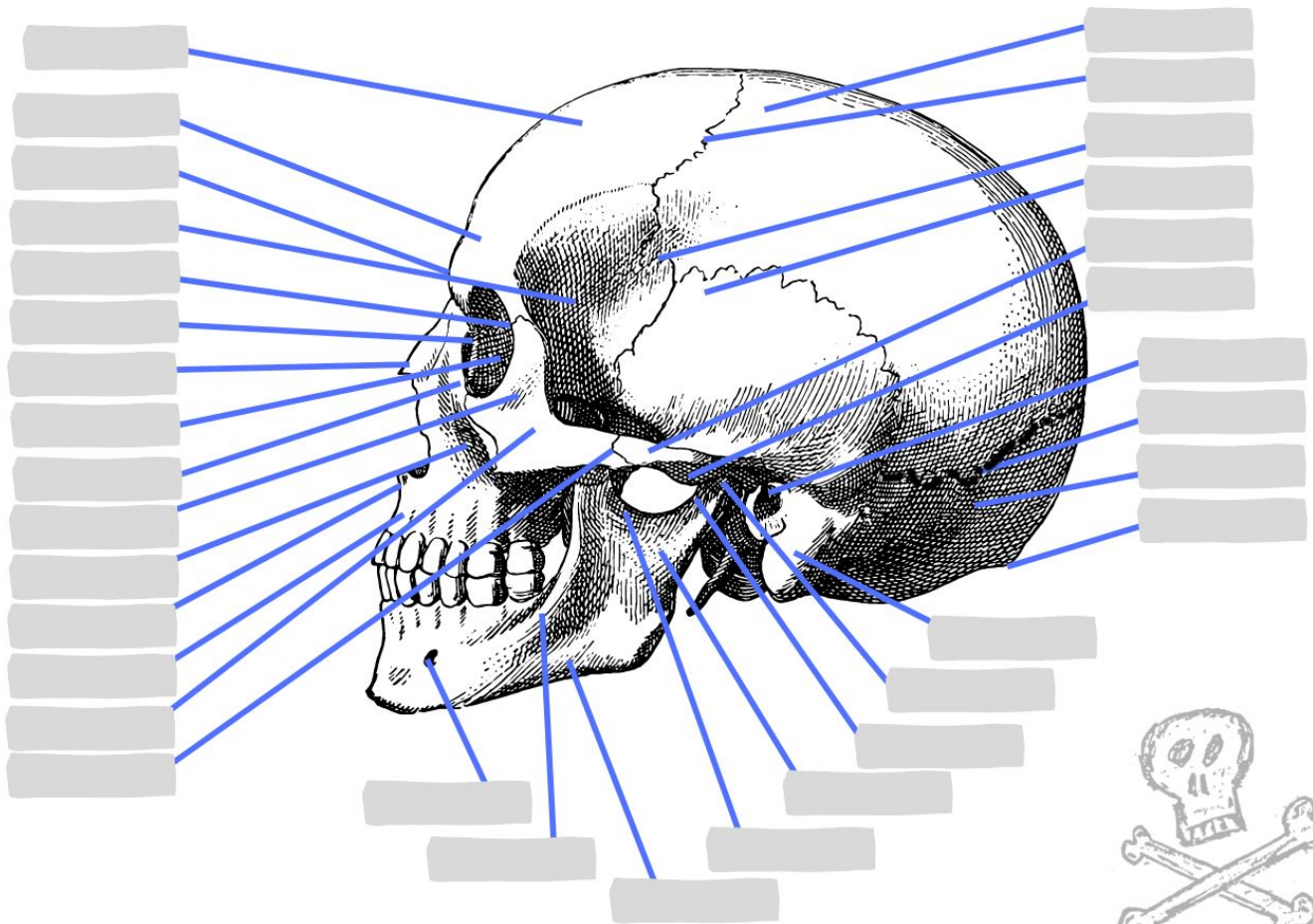


Name:
Date:

Advanced Anatomy of a Skull

Label the parts of a skull



Word Bank

Nasal bone Mandible body Oblique line Mental foramen Ramus Coronoid process
Mandibular notch Lacrimal bone Ethmoid bone Sphenoid bone Glabella Fossa for lacrimal sac
Frontal process Articular tubercle Pterion Occipital bone Mastoid process Zygomatic arch
Temporal process Alveolar process Squamous temporalis Lambdoid suture External acoustic meatus
Anterior nasal spine Supraorbital notch Infraorbital foramen Head of condylar process
External occipital protuberance Parietal bone Coronal suture Zygomatic process Frontal bone
Zygomatofacial foramen